



Winter 2011

Fly Airlines 123:
Rochester tower,
Fly Airlines 123,
Good morning.

Rochester tower: Fly Airlines 123, expect indefinite delay due to heavy traffic.

Fly Airlines 123:
Rochester Tower,
Cancel Good morning.

The strength of the turbulence is directly proportional to the temperature of your coffee.

Gunter's Second Law of Air Travel

You start flying with an empty bag of experience and a full bag of luck. The trick is to fill your bag of experience before you empty your bag of luck.



This issue....

Airport Projects Update.....	2
Air Service Update.....	4
Public Safety Services.....	5
Airport Happenings.....	6
Tenant Spotlight.....	7

Airport Manager's Update

In the airport management environment, we often say there are two seasons: Winter and construction. This statement hasn't necessarily held true for Rochester International Airport over the course of this last year. As you may recall from previous newsletters, last summer we completed several airfield related projects such as milling and paving taxiway Bravo and associated crossover taxiways, and a concrete rehabilitation project on the main passenger terminal parking apron.



As you will see in the following pages, our construction season continued through the fall, which is when construction typically starts to slow down, and is still ongoing as I write this. Although most of the major construction associated with the terminal renovation and restaurant makeover is complete, there are still a few minor items to be finished before we can say that the construction "season" is over...at least until we begin work in a few months on exterior terminal renovations (tuck pointing, caulking, etc) and asphalt rehab around the exterior of public and airside areas of the terminal.

On a different note, you may have noticed that the military C-130's have been performing more operations than what has been observed over the last couple of years. The City of Rochester and the airport recently signed a Joint Use Agreement with the MN Air Guard, allowing the Air Guard to resume operations at RST. The previous Joint Use Agreement with the Air Force Reserve was canceled due to the airport not being able to financially support the Air Force Reserve's firefighting requirements. In late 2010, the MN Air National Guard approached the airport about resuming operations at RST. Just recently a new agreement was signed by both parties that allows for the Air Guard to fly at RST with the current levels of firefighting support as required by the airport's FAA airport operating certificate. In addition, the MN Air National Guard will pay an annual airport use and maintenance fee, which is money that is to be used for additional airfield maintenance costs placed on the facilities (runways) by the C-130's. This is a win-win situation for all parties involved: The FAA air traffic control tower can utilize these operations for training junior air traffic controllers, the military has the use of an excellent and well-maintained facility to conduct their training at, and the airport has an additional source of revenue.

Before I close I would like to take the time to let you know about our present marketing campaign. If you have wandered around the subway system downtown you may have seen our new airport advertisement displaying the "Check RST" logo. As part of this campaign we are encouraging travelers to always check prices from RST when booking their travel. Many travelers have reported that their airfares have been less inexpensive than if flying from Minneapolis. So remember to "Check RST" the next time you are making your travel arrangements.

This is *your* airport. My staff and I continue to work to provide the best services possible to Rochester and the surrounding communities. Look for more exciting changes to come (especially the warm weather...).

As always, I would like to personally thank you for your continued support of the Rochester International Airport.

Steven W Leque

Steven W. Leque
Airport Manager

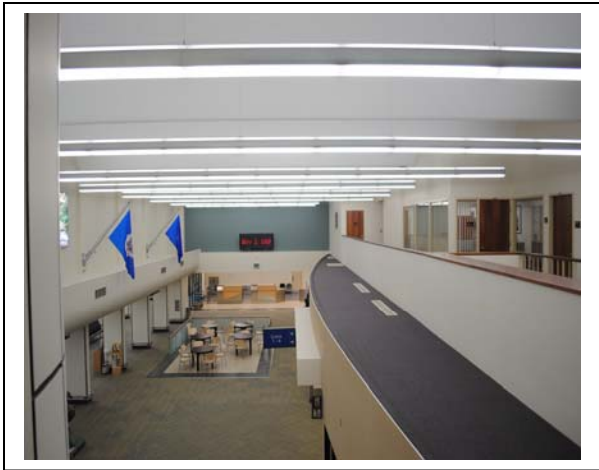


Airport Projects Update...

TERMINAL RENOVATIONS

With a few minor exceptions, the major terminal remodeling project has been completed. Rochester International Airport would like to thank you for your patience during this project.

As the old adage goes "good things come to those who wait", this project has transformed the Rochester International Airport into a beautiful center piece for the City of Rochester and surrounding communities. The main lobby now features a light and airy atmosphere, with a modern aesthetic appeal. New seating, completely refurbished baggage carousel systems, and contemporary designs give the fifty year old building a young and vibrant look...Take a look...



Airport Projects Update (cont)

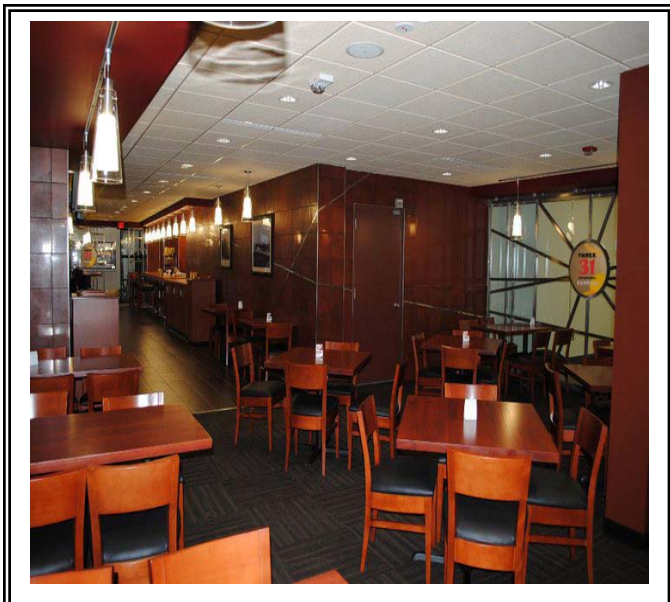
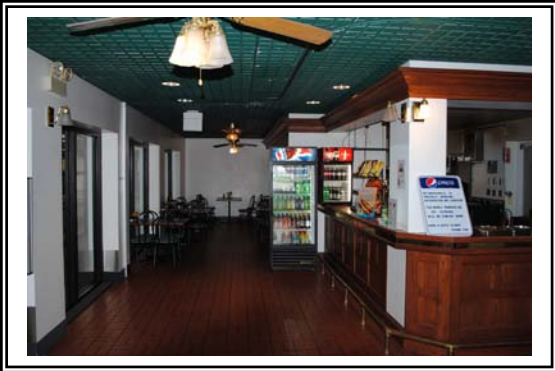
RESTAURANT REMODEL

The airport restaurant, 331 Express, is now open for business in their "new" old location. The project, started in June of last year, was completed in late December. The result of this project is a total transformation of the airport restaurant facilities.

Once dark and dreary, the new facility presents an open floor plan, comfortable lighting, and panoramic views of the terminal lobby, as well as the passenger gate areas.

The next time you are flying out of Rochester, please make sure you stop in to say hello to Jimmy and his staff, and take a minute to enjoy one of the many excellent menu items in a modern and relaxing environment.

Restaurant Hours are 6 am to 6 pm Daily...For a menu please visit www.flyrst.com/terminalinfo/331menu.pdf



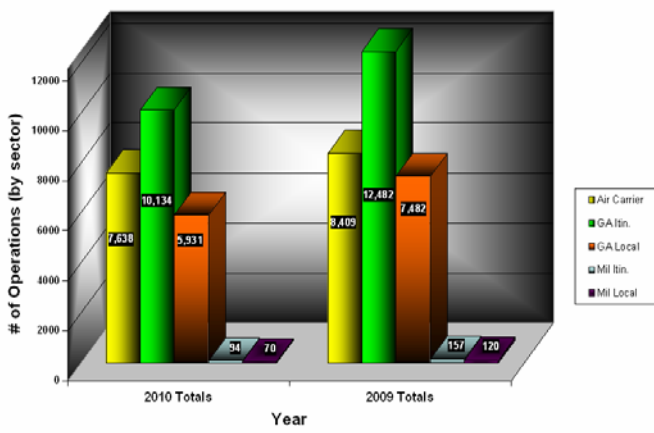


Air Service Update

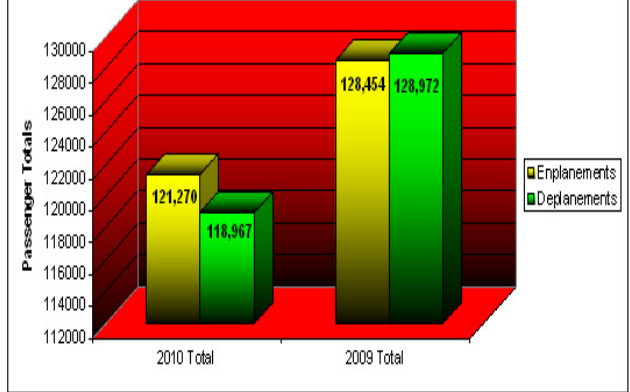
RST Passenger Statistics		
2010 Totals		
Month	Enplanements	Deplanements
Jan	9,176	8,812
Feb	8,410	7,771
Mar	8,130	7,918
Apr	9,687	10,174
May	11,047	11,030
June	10,862	11,003
July	11,908	10,582
Aug	10,992	11,380
Sep	10,417	10,460
Oct	11,837	11,381
Nov	10,199	10,229
Dec	8,605	8,227
2010 Totals	121,270	118,967
2009 Totals	128,454	128,972



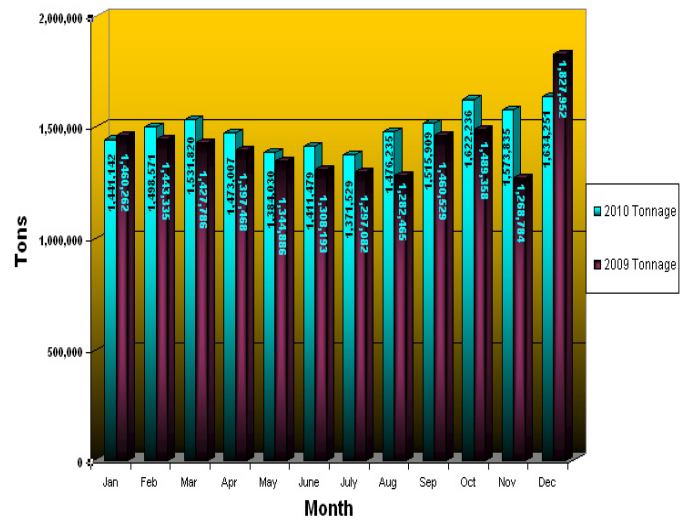
Aircraft Operations by Sector (through July 2009 vs. 2010)



Enplanements & Deplanements (2009 vs. 2010) January through December



Air Cargo Tonnage 2009 vs. 2010





Public Safety Services

In October the Rochester International Airport completed a significant equipment upgrade to one of our Airport Rescue and Firefighting Vehicles, Rescue 3.

For almost a month and a half, Rescue 3 had a break from the Minnesota weather, enjoying the nice Texas weather at the Crash Rescue, Inc. facility in Dallas, Texas, where it was retrofitted with a Snozzle®. The Snozzle®, also known as a High Reach Extendable Turret (HRET), is a telescoping water tower, fitted with a piercing nozzle at the tip. The Snozzle® allows aircraft firefighters the ability to fight interior (and exterior) aircraft fires from within the truck. The piercing nozzle, along with a heat sensitive infrared camera, allows the firefighter to locate the interior heat source, pierce the skin of the aircraft at that location, and apply foam and water, all without putting the lives of responders in jeopardy.

Time is an always an issue when dealing with an aircraft fire. The primary responsibility of an aircraft rescue firefighter has always been to establish a clear path for passengers and crew to safely exit an aircraft by fighting the *external* aircraft fire. Now aircraft firefighters have the ability to fight an external, *and internal*, aircraft fire.

This device is one more tool available to RST personnel to ensure the safest environment possible for the traveling public.



Trivia Time

Look at the picture to the right and answer

The following 2 questions:

1. Where is this airport
2. What is the name of the airport?



The first person to email the correct answer to bthompson@flyrst.com will receive a \$5.00 voucher to the 331 Express.

CONGRATULATIONS TO MARSHA GEE, FROM AMERICAN EAGLE AIRLINES, FOR BEING THE FIRST TO CORRECTLY ANSWER LAST QUARTERS TRIVIA QUESTION.

THE CORRECT ANSWER WAS: 1. Hong Kong 2. Kai Tak 3. Checkerboard Approach

Airport Happenings...

Anniversaries

Congratulations to the following airport employees for their "endurance". Say hi to these individuals the next time you see them and let them know you appreciate their dedication to making RST a great place to work and visit:

Tom Smith	-Airport Maintenance	- 21 years in September
James Newman	-Airport Maintenance	- 15 years in January
Ron Cropp	-Airport Maintenance Supervisor	- 12 years in November
Tom Ostby	-Airport Fire Dept.	- 10 years in November
Mitch Mosher	-Airport Maintenance	- 3 years in October
Robbie Veldhuisen	-Airport Fire Dept.	- 3 years in November
Brian Thompson	-Airport Operations Manager	- 3 years in November

→→→→→ **The Rochester Airport Company welcomes our newest employees** →→→→→

Jerry Madson	-Airport Maintenance	- Started January 10, 2011
--------------	----------------------	----------------------------

Social Networking Update....



Have you "liked" the Rochester International Airport Facebook page yet? If not, you could be missing out on important updates, updated photos of the facilities, and most importantly....PRIZES! Yes, you read that right. Periodically trivia questions are posted on our Facebook page, with prizes awarded to the first fan to correctly answer the questions.

Think you know the history of the airport? Want to know what others are saying about Rochester International Airport? Log into Facebook and "like" our page at <http://www.facebook.com/#!/pages/Rochester-International-Airport-Rochester-MN/147621781941249> to participate in the fun...

We look forward to having you as one of our "fans"....



Tenant Spotlight...



This is a special edition of the "Tenant Spotlight". Typically an organization, rather than an individual, is highlighted in this segment of the newsletter. However, due to the special honor that a local tenant employee received in late 2010 an exception is being made for this edition of the RST Airside Times.

Mary Snyder, a supervisor for American Eagle Airlines – Rochester, was selected as the American Eagle 2010 Outstanding Employee. As part of this honor an American Eagle Embraer 140 was dedicated as "Mary's Airplane". This aircraft, N857AE, has plaque in Mary's honor that is located in the flight attendant's station, located just inside the door of the aircraft. This aircraft arrived in Rochester recently, allowing Mary to be forever captured in front of "her" airplane.

Congratulations Mary!!!

Adrienne Britson, Ramona Hadland, Mary Snyder, Marsha Gee →



DID YOU KNOW?

Rochester International Airport is managed and operated by the Rochester Airport Company, a wholly-owned subsidiary of Mayo Clinic. The Rochester Airport Company, established in 1928 by William and Charles Mayo, has owned and/or managed and operated all of the airports in the history of the city.

In the 83 year history of the Rochester Airport Company there have been only three airport managers: Don Swenson, Lowell Helgerson and Steven Leqve. An impressive statistic for any organization.

The current airport has been at it's present location since 1960. This past September the Rochester International Airport celebrated its 50th birthday at its present location.



<http://www.flyrst.com>